

Royale Limousine Owner's Guide

Cadillac DTS • Lincoln Town Car • Lincoln Navigator • Ford Expedition



Royale

WHERE CRAFTSMANSHIP COUNTS™

a Cabot Coach Builders Company

www.royalelimo.com

CORPORATE HEADQUARTERS - 99 Newark Street, Haverhill, MA 01832

ph. 800.544.5587 • fx. 978.521.5425

Table of Contents

Congratulations on Your Purchase of a Royale Limousine Manufactured Where Craftsmanship Counts!	1
Have Questions? A Royale Team Member is Ready to Help.	2
Helpful Hints and Recommendations	3
Control Panel Users Guide - Driver (<i>Standard Equipment</i>)	4
Control Panel Users Guide - Passenger (<i>Standard Equipment</i>)	6
Audio Video System Users Guide	8
Driver's Touch Control Operation Guide (<i>Optional Equipment</i>)	9
Passenger's Touch Control Operation Guide (<i>Optional Equipment</i>)	11
Mobile Hot Spot (<i>Optional Equipment</i>)	15
Mobile Computer (<i>Optional Equipment</i>)	15
Advanced Lighting and Fan Speed Features	16
Intercom Adjustments	17
Operating The LED Fiber Illuminator	18
DIP Switch Functions	19
Main Circuit Board Photo	20
Fuse Values	20
Circuit Board Pin Location · Color · Function	21
Main Board Trigger Wire Location – Color – Factory Fuse Location	22
Wire and Harness Location · Color · Function	23
Wire and Harness Location · Color · Function	24
Power Distribution Module – Town Car	25
Power Distribution Module – DTS and Navigator	26
Wire Routing Extension · Town Car	27
Wire Routing Main Harness · Town Car	28
Wire Routing Extension · DTS	29
Wire Routing Main Harness · DTS	30
Wire Routing Extension · Navigator	31
Wire Routing Main Harness · Navigator	32
Heater Control Valve Operation	33
Manual Heater Control Valve Locations · Town Car · Navigator · DTS	34
Dual Battery Schematics · Town Car and DTS · Optional Equipment	35
Dual Alternator Location · Town Car · Optional Equipment	36
Dual Alternator Schematics · Town Car · Optional Equipment	37
Dual Battery and Alternator Schematics · Navigator	38
New Vehicle Limited Warranty · United States Only	39
New Vehicle Limited Warranty · International	40



Congratulations on Your Purchase of a Royale Limousine Manufactured Where Craftsmanship Counts!

Since 1983 Royale has been manufacturing the finest limousines in the world and backing each with exceptional service. It is my true belief that Royale's exceptional service will encourage you to purchase your future limousines from us. That is why we have compiled this comprehensive manual; to help you with questions you may have concerning your new limousine.

Please take a few minutes to review this manual which is full of useful tips, operational instructions, and wiring schematics. The Table of Contents allows you to easily navigate to the section of interest by using the built-in links. There are also embedded quick links so you can contact us should you have any questions.

I welcome your comments as we are constantly striving to improve our processes, products and service.

Congratulations and enjoy your new limousine hand-crafted and manufactured by Royale.

Best Regards,

Cabot Smith
President



Have Questions? A Royale Team Member is Ready to Help.

Managers

Please feel free to contact the following Managers with any questions or concerns.

Cabot Smith, President

ph. 978.374.4530 x 19

e-mail: cabot.smith@royalelimo.com

Steve Edelmann, Director of Sales

ph. 978.374.4530 x16

e-mail: steve@royalelimo.com

Jeff DeMarco, Director of Operations

ph. 978.374.4530 x 25

e-mail: jeff@royalelimo.com

Warranty

For questions regarding warranty service please contact our Warranty Department.

Ask for Service

ph. 978.374.4530 x20

e-mail: service@royalelimo.com

A representative will be able to help you locate a regional authorized service facility for limousine repairs or your regional Cadillac or Lincoln dealers. Also our web site offers a list of your regional authorized service facilities at:

www.royalelimo.com/service/dealers.aspx

Warranty service must be authorized in advance before Royale will accept any charges.

Parts

If you need replacement parts for your limousine call the number below. We ship parts daily all over the world and accept Visa and Master Card for your convenience.

Ask for Parts

ph. 978.374.4530 x15

e-mail: parts@royalelimo.com

Sales

If you have a sales question or would like copies of your sales documents you can contact your salesperson by calling or e-mailing them directly. If you misplaced your salespersons e-mail address you can find it at:

www.royalelimo.com/company/consultants.aspx

Ask for Sales

ph. 978.374.4530

e-mail: sales@royalelimo.com

Helpful Hints and Recommendations

Here are some helpful hints to help you maintain your Royale limousine and avoid some of the problems that might arise.

Watch the tire pressure closely, rotate tires frequently every 5,000 miles or as recommended in OEM manual. Royale recommends the following tire pressures for your limousine unless otherwise indicated on the vehicle label.

Tire Pressure

- 42 lbs. for Lincoln 60-inch to 120-inch
- 41 lbs. for Cadillac 45-inch
- 64 lbs. for Cadillac 70-inch to 130-inch
- 40 lbs. for Navigator 140-inch

Other

You can save fuel by keeping your idling time to a minimum. According to the California Energy Commission “vehicle idling burns about a half mile of gasoline for every minute of idling.”

- When using the air conditioner in warm weather, keep the engine idle up if stopped and waiting.
- Keep the battery cables clean and tight.
- Change the oil and grease every 3,000 miles including drive shaft grease fittings.
- Align the front end at recommended intervals, realign after first 5,000 miles.
- Keep extra fuses in glove box. Keep a spare set of keys available.
- Wash the vehicle with proper products. Do not wax the car for 90 days. Read the Paint Guide Lines.
- Clean and sanitize cooler drains and drink dump drain frequently to insure proper draining.
- Have only qualified mechanics work on your limousine.



- Worn or broken trunk weather strips may cause trunk water leaks, inspect trunk weather strips frequently.
- Follow the original manufactures recommended maintenance program for your vehicle. It is additionally recommended by Lincoln that the Navigator outer tie rod ends be replaced at every 30,000 mile interval.
- Clean and lubricate moon roof cables and slides weekly and blow out moon roof drains frequently.
- Please read your Royale Limousine U.S. New Vehicle Limited Warranty. We offer a 60-month/150,000 mile limited warranty on our structural modifications and a 24-month/50,000 mile limited warranty on the conversion components.

NOTE: It is important that you contact our Warranty Department before any warranty repair work is performed.

Contact the Warranty Department for your authorization at 978.374.4530 or service@royalelimo.com

Control Panel Users Guide - Driver *(Standard Equipment)*



Driver's Control Panel

Battery Level Indicator

These indicator lights notify you of the charging condition of your battery. When the battery voltage is high green lights are lit, which indicates a normal operating condition. When the voltage drops the yellow lights come on notifying you that the voltage is low. You should try to run up the idle if in park or shut off rear features to bring the battery voltage up to green. The red lights indicate that voltage is low, stalling may occur if this condition continues, the driver should increase the idle if possible or shut off rear features. If the driver does not act then the rear cabin air conditioning fans will be shut down automatically until the system returns to normal levels.



Master Switch

This switch controls the power to the entire system. Press this switch to activate power to the controls and rear features including TV, Stereo, Lighting and Air Conditioning.



Intercom On/Off

This button turns on the front-to-rear hands free intercom. Pressing the button will activate the intercom and will illuminate the green indicator light. With the light on speak freely toward the button to communicate with the rear passengers. Press the button again to shut off the two-way intercom.



Sun Roof On/Off

This button controls power to rear cabin sunroof so the rear passenger will not be able to open or close the sunroof. Press to activate the sunroof, the indicator light will show green. Press to deactivate or turn off the sunroof and indicator light will be off.



Stereo On/Off

This button controls the power to the rear stereo so the rear passenger will not be able to use the rear stereo system. Press to activate rear stereo system and the indicator light will show green. Press again to deactivate the rear stereo system and the indicator light will be off.



Divider On/Off

This button controls power to the dividers so the rear passengers will not be able to control the dividers. Press to activate the divider system and the green light indicates divider power is active. Press again to deactivate turn off the dividers and the indicator light will be off.



Color On/Off

This button controls the color effects of the accent lighting system. Press this button to change the color effects, there are multiple effects depending upon the initial set up of the system. Refer to page 18 of this manual "Operating the LED Fiber Illuminator" to change your systems setup.



Auxiliary Battery

This button operates the auxiliary battery system in your limousine. If the main battery is dead press and hold this button then turn the ignition key to start vehicle. Once the vehicle is running, release the button and continue with normal operation. In extreme cases you may need to hold the auxiliary battery button down for a few minutes to keep your engine running while your main battery charges. As soon as possible have your main battery and charging system checked to determine the cause of the main battery failure.



Auxiliary On/Off (Aux)

This button is reserved for future or additional features.

Sun Roof

This button operates rear cabin sunroof. Press and hold up to open and press and hold down to close.



Glass Divider

This button operates the clear glass divider. Press and hold up to raise and press and hold down to lower.

Privacy Divider

This button operates the solid privacy divider. Press and hold up to raise and press and hold down to lower.



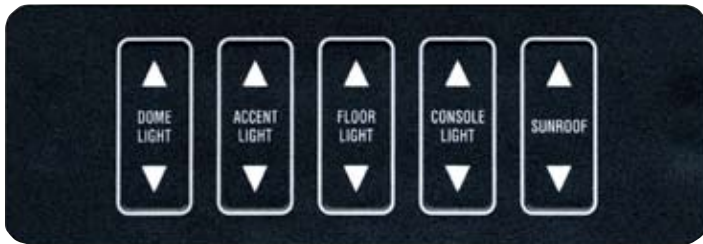
Rear Fan

This button operates the rear fan for climate control in rear compartment. Once rear system is activated, the rear fan velocity can be adjusted from the driver control panel. Press up to increase airflow, down to decrease airflow. The A/C or heat is set from it's last position and can only be changed from the rear.

Control Panel Users Guide - Passenger *(Standard Equipment)*



Passenger's Control Panel



Passenger's Lighting Control Panel

Rear control panel features indicated with * are overridden by the driver's master control panel located in the front compartment. These features as well as the rear stereo may be deactivated at the driver's discretion.



Dome Light

This button controls the rear dome lights. Press and hold up and the dome light(s) come on and press and hold down to turn the dome light(s) off.

Accent Lights

This button controls the accent or fiber optic lights in the console and above the windows. These lights are dimmed when the down button is pressed and brightened when the up button is pressed.



Floor Lights

This button controls the rear floor lights. Press up and the floor lights come on and down to turn the floor lights off. The floor lights also come on automatically when the rear doors are open.

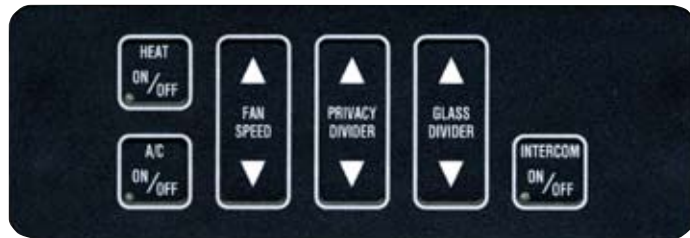
Console Lights

This button controls the lights in the console to provide light for easy viewing of glassware and coolers at night. These lights are dimmed when the down button is pressed and brightened when the up button is pressed.



Sunroof*

This button controls the sunroof, pressing the up arrow will open the sunroof and pressing the down arrow will close the sunroof. Be sure to completely close the sunroof for a tight seal to avoid water leaking in to the limousine.



Passenger's Climate Control Panel

Heat On/Off

This button activates the rear heat. Press this button to activate the rear heat, press it again to turn the heat off. You may also switch directly to A/C by pressing the A/C button and the heat will automatically turn off.



A/C On/Off

This button activates the rear air conditioning. Press this button to activate the rear air conditioning, press it again to turn the air conditioning off. You may also switch directly to heat by pressing the heat button without turning off the heat. It may take the system a few minutes to completely circulate the heat out of the system when switching from heat to A/C.



Fan Speed*

This button adjusts the rear fan speed. Pressing the up button adjusts the fan speed faster for more passenger cooling or heat and pressing the down button adjusts the fan speed lower for less cooling or heat.



Privacy Divider*

This button adjusts the privacy divider, pressing up will raise the divider and pressing down will lower the divider.



Glass Divider*

This button adjusts the glass divider, pressing up will raise the divider and pressing down will lower the divider. Glass dividers are not available in some models.



TV *

This button is an optional button that replaces the glass divider button when the limousine is equipped with the retractable TV. Pressing the up button will raise the flat panel TV and pressing the down button conceals the TV.



Intercom On/Off*

This button turns on the rear to front hands free intercom. Pressing the button will activate the intercom and will illuminate the green indicator light. With the light on speak freely toward the button to communicate with the driver. Press the button again to shut off the two-way intercom.



* Rear control panel features can be overridden by the driver's master control panel.

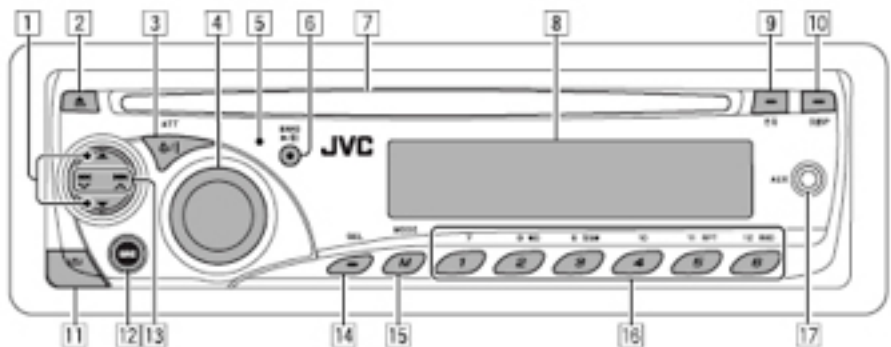
Audio Video System Users Guide



AM/FM CD/DVD Player is located in the overhead Passenger Control POD

Basic Operation

The basic operation of your AM FM CD DVD Player is illustrated here. For complete details on operating your Audio Video system please refer to the 2009 JVC KD-DV5400 Owners Manual included on your Owners Reference Material CD.



- | | |
|--|---|
| <p>1 • FM/AM: Select preset station.
• SIRIUS/XM: Select category.
• DISC: Select title/program/playlist/folder.
• IPOD: Enter the main menu/Pause playback/Confirm selection.</p> <p>2 Eject disc.</p> <p>3 • Turn on the power.
• Turn off the power [Hold].
• Attenuate the sound (if the power is on).</p> <p>4 Volume control [Turn].</p> <p>5 Remote sensor</p> <p>6 • FM/AM/SIRIUS/XM: Select the band.
• DISC: Start/pause playback.</p> <p>7 Loading slot</p> <p>8 Display window</p> <p>9 Select the sound mode.</p> <p>10 Change the display information.</p> <p>11 Detach the panel.</p> <p>12 Select the source.
FM/AM → SIRIUS/XM* → DISC* → CD-CH*/IPOD* (or EXT IN) → AUX IN → (back to the beginning)</p> <p>13 • FM/AM/SIRIUS/XM: Search for station/channel.
• DISC/CD-CH: Select chapter/track.
• IPOD: Select track.</p> | <p>14 • Adjust the sound mode.
• Enter the PSM settings [Hold].</p> <p>15 Enter functions mode.
• Press M MODE, then one of the following buttons (within 5 seconds)...
MO : Turn on/off monaural reception.
SSM : Automatic station presetting [Hold].
RPT : Select repeat play.
RND : Select random play.
▲/▼ : Skip 10 chapters/tracks.</p> <p>16 • FM/AM/SIRIUS/XM: Select preset station/channel.
• DISC/CD-CH: Select chapter/title/program/folder/track/disc (for CD changer).</p> <p>17 AUX (auxiliary) input jack</p> <p>* You cannot select these sources if they are not ready or not connected.</p> |
|--|---|

Driver's Touch Control Operation Guide *(Optional Equipment)*



Driver's Touch Control

Driver Panel Overview

The Driver Touch Control Panel offers the ability to hide features from the passenger menu by deactivating the feature and hiding the button from the passenger when necessary. It also allows full access to all of the passenger control features through the passenger menu button.

To power the system the driver must accept the responsibility by pressing yes on the Driver Control. After a few seconds the main board and rear control panel will be active.

The Clock is replaced by a battery level indicator to notify the driver of a low voltage condition. When the battery is low the clock will be replaced by LOW BATT indicator requesting the driver to act. If this condition continues stalling may occur, the driver should increase the idle if possible or shut off rear features until a normal level is reached, if the driver does not act then the rear cabin air conditioning fans will be shut down automatically until the system returns to normal levels.



Driver's Main Menu



The Clock is replaced by a battery level indicator to notify the driver of a low voltage condition.


Intercom

This button turns on the front to rear intercom. Pressing the button will activate the intercom and will illuminate the green indicator light. With the light on speak freely toward the button to communicate with the rear passengers. Press the button again to shut off the two-way hands free intercom.

A rectangular button with rounded corners, a black circular indicator on the left, and the word "INTERCOM" in bold black capital letters on the right.


Stereo

This on/off button allows the driver to shut off passenger control of the rear Stereo. By selecting off the rear Stereo will be shut off and the button will be deleted from the passengers menu. Select on and the rear Stereo is returned to normal and the button reappears on the passenger display. A green light indicates the rear Stereo is active.

A rectangular button with rounded corners, a black circular indicator on the left, and the word "STEREO" in bold black capital letters on the right.

Divider

This on/off button allows the driver to shut off passenger control of the Dividers. By selecting off the Dividers will be shut off and the button will be deleted from the passengers menu. Select on and the Dividers are returned to normal and the button reappears on the passenger display. A green light indicates the Dividers are active.

A rectangular button with rounded corners, a black circular indicator on the left, and the word "DIVIDER" in bold black capital letters on the right.


Color

This on/off button allows the driver to shut off passenger control of the fiber optic color system. By selecting off the fiber optic color system will be shut off and the button will be deleted from the passengers menu. Select on and the fiber optic color system is returned to normal and the button reappears on the passenger display. A green light indicates the rear system is active. The actual function of this button is affected by the set up of the LED illuminator (see page 18) "Operating the LED fiber Illuminator."

A rectangular button with rounded corners, a black circular indicator on the left, and the word "COLOR" in bold black capital letters on the right.


Sunroof

This on/off button allows the driver to shut off the passenger control of the sunroof. By selecting off the sunroof will be shut off and the button will be deleted from the passenger menu. Select on and the sunroof is returned to normal and the button reappears on the passenger display. A green light indicates the sunroof is active.

A rectangular button with rounded corners, a black circular indicator on the left, and the word "SUNROOF" in bold black capital letters on the right.


Passenger

This button allows the driver to control all passenger functions please refer to passenger functions reference guide on page 11 for details. When the driver presses a button in this menu the rear passenger control will follow along allowing the driver to assist the passenger in navigating through the menus.

A rectangular button with rounded corners and the word "PASSENGER" in bold black capital letters.

Dim Display

This button allows the driver to dim or brighten the display. Follow the easy to read menu to adjust the display.

A rectangular button with rounded corners and the words "DIM DISPLAY" in bold black capital letters.

Set Clock

This button allows the driver to reset the clock. Follow the easy to read menu to reset the clock.

A rectangular button with rounded corners and the words "SET CLOCK" in bold black capital letters.

Shut Down

This button allows the driver to shut down the entire system when not in use. This is always a good idea to conserve resources and charge the battery. The clock will still display in shut down mode.

A rectangular button with rounded corners and the word "SHUTDOWN" in bold black capital letters.

Red Button

This button operates the auxiliary battery system in your limousine. If main battery is dead press and hold this button then turn the ignition key to start the vehicle. Once the vehicle is running, release the button and continue with normal operation. In extreme cases you may need to hold the auxiliary battery button down for a few minutes to keep your engine running while your main battery charges. As soon as possible have your main battery and charging system checked to determine the cause of the main battery failure.



Passenger's Touch Control Operation Guide *(Optional Equipment)*

Passenger Panel Overview

The driver has full access to the passenger controls from the driver panel. When the driver adjusts passenger features his/her actions will be displayed on the rear controls. This is to assist the passengers with navigating the Touch Control's many features.

Climate Control Menu

The Climate Control Menu adjusts the climate in the rear cabin and activates the intercom.

A/C

This button activates the rear air conditioning. Press this button to activate the rear air conditioning, press it again to turn the air conditioning off. The green light indicates air conditioning is on. You may also switch directly to heat by pressing the heat button which will automatically turn off the air conditioning. It may take the system a few minutes to completely circulate the heat out of the system when switching from heat to A/C.



Heat

This button activates the rear heat. Press this button to activate the rear heat, press it again to turn the heat off. The green light indicates heat is on. You may also switch directly to A/C by pressing the A/C button which will automatically turn off the heat.

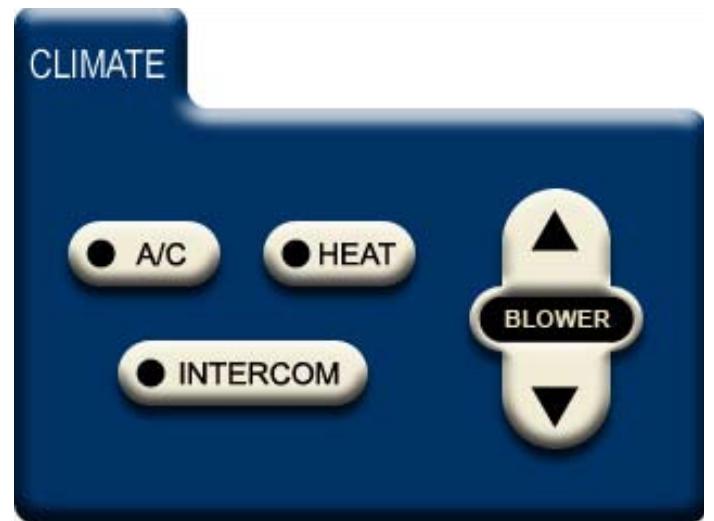


Blower

This button adjusts the rear fan speed. Pressing the up button adjusts the fan speed faster for more passenger cooling or heat and pressing the down button adjusts the fan speed lower for less cooling or heat.



Passenger's Touch Control panel



Passenger's Climate menu

Intercom

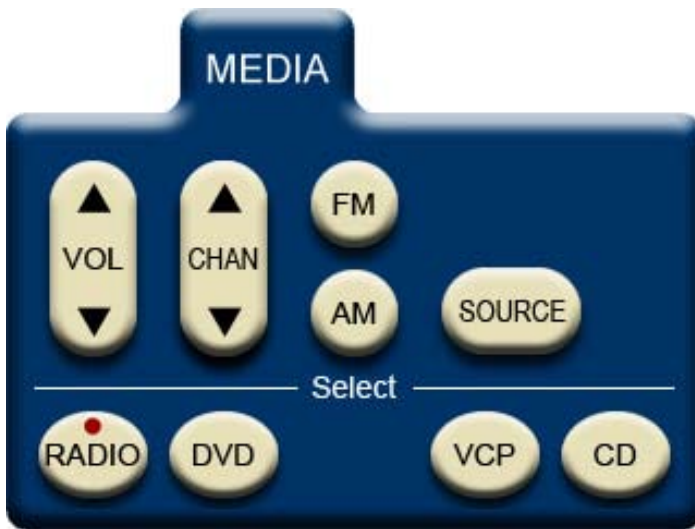
This button turns on the rear to front intercom. Pressing the button will activate the intercom and will illuminate the green indicator light. With the light on speak freely toward the button to communicate with the driver. Press the button again to shut off the two-way hands free intercom.



Media Menu Overview

The Media menu controls the media system features of your limousine including your Stereo, DVD, TV, VCP and CD. This menu uses easily recognizable icons to control its functions. Many of the buttons on each menu are self explanatory so there is a description only for the buttons that require more information. Select the Media feature you want to control by pressing the button in the Select menu, a red light will indicate the source is selected.

Select RADIO Menu



Channel (CHAN)

This button will advance to the next frequency or find the next local channel depending upon how the Stereo search is pre-set on the stereo.



Source

This button changes the Stereo source. The rear Stereo has several input sources available; AUX is generally the last source in the sequence. The normal sequence for the Stereo sources are as follows; FM/AM, Sirius/XM, DISC, CD Changer, IPOD, Auxiliary In. Press the source button until the desired source is selected.



Select DVD Menu



Power (PWR)

This button will turn the DVD player on or off. The default source of the DVD player is DVD. Press this button to turn the DVD player on and insert a disc.



Volume (VOL)

This button controls the DVD volume. Press the up arrow for more volume and the down arrow for less volume.



Select CD Menu



VOL

This button controls the CD volume. Press the up arrow for more volume and the down arrow for less volume. By inserting a CD the Stereo source will automatically change to CD and begin play.



Select VCP Menu



Power (PWR)

This button will turn the VCP on or off. The Source must be set to AUX. See instructions in Radio Source for more information.



Divider Menu

The Divider menu controls the mechanical features of your limousine including the dividers, sunroof and optional 20" TV.

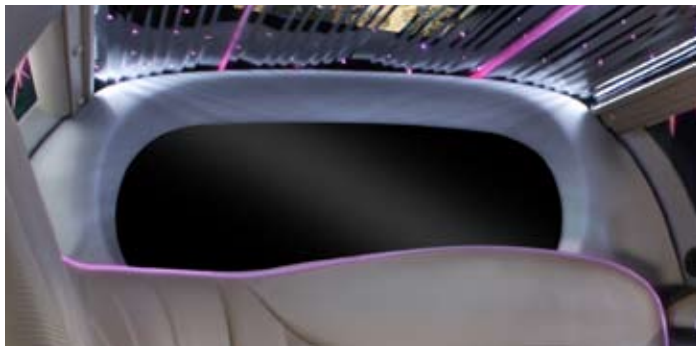


Retractable TV

Behind the Privacy Divider glass may be the optional 20" TV. Press the up arrow to raise the divider and turn the TV on with the DVD Power on button. The TV will light up exposing it from behind the divider smoked glass. Press the down arrow to lower the divider.



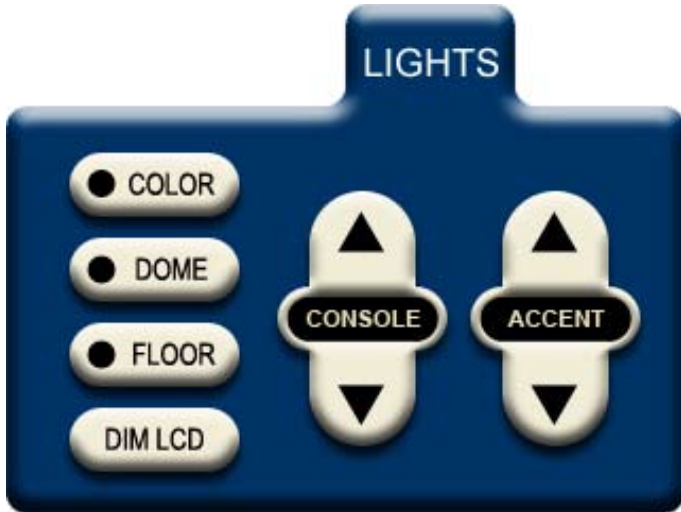
divider up TV on



divider up TV off

Lights Menu

The Lights Menu controls the rear lighting systems. Some of the lighting systems are dimmable while others are not.



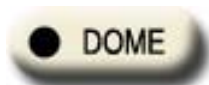
Color

This button controls the color effects of the accent lighting system. Press this button to change the color effects, there are multiple effects depending upon the initial set up of the system. Refer to "Operating the LED Fiber Optic Illuminator on page 18 of this manual to change your systems setup.



Dome

This button controls the rear dome lights. Press this button to turn on the rear dome lights, press it again to turn the dome lights off. The green light indicates the lights are on. Some dome lights can also be turned on manually by rotating the light right or left.



Floor

This button controls the rear floor lights. Press this button to turn on the rear floor lights, press it again to turn the floor lights off. The green light indicates the lights are on. The floor lights also come on automatically when the rear doors are open.



Dim LCD

This button allows the rear passenger to dim or brighten the display. Follow the easy to read menu to adjust the display.



Console

This button controls the lights in the console to provide light for easy viewing of glassware and coolers at night. These lights are dimmed when the down arrow is pressed and brightened when the up arrow is pressed.



Accent

This button controls the accent or fiber optic lights in the console and above the windows. These lights are dimmed when the down arrow is pressed and brightened when the up arrow is pressed. To adjust the color or light systems see the Color button above.



Divider Menu

The Divider menu controls the mechanical features of your limousine including the dividers and sunroof.



Privacy Divider

This button controls the privacy divider, pressing the up arrow will raise the divider and pressing down arrow will lower the divider.



Glass Divider

This button controls the glass divider, pressing the up arrow will raise the divider and pressing down arrow will lower the divider. Glass dividers are not available in some models.



Sun Roof

This button controls the sunroof, pressing the up arrow will open the sunroof and pressing the down arrow will close the sunroof. Be sure to completely close the sunroof for a tight seal to avoid water leaking into the limousine.



Mobile Computer (Optional Equipment)

The computer is mounted in the driver's compartment. Turn on the computer by having the driver press power on the computer and then flip the overhead monitor down and press power on the monitor. This monitor can also display the TV by switching the input source. Monitor set-up may vary.



*mini computer
(actual model may vary)*

A secondary computer display may be on the 20-inch retractable monitor in the divider. This monitor must be raised with the divider menu and switched to PC source with the TV remote control.

Use the wireless keyboard and integrated mouse to control the on board computer to surf the internet, access e-mail, etc. This computer accesses the internet via a high speed cellular card, service speed may vary depending upon the vehicle location.

The computer should be shut down through the normal on screen sequence and then powered off with the main power button.

Mobile Hot Spot (Optional Equipment)

This system is activated when the vehicle is started, connection to the internet may take several minutes depending upon the vehicles location. Users can access the internet via this mobile hot spot wirelessly with a personal computer or via the optional mobile computer.



*mobile router (actual
model may vary)*

This mobile hot spot accesses the internet via a high speed cellular card, service speed may vary depending upon the vehicle location.

Advanced Lighting and Fan Speed Features

User programmable start up features are available by adjusting the DIP switches located on the main circuit board, upper left corner labeled "OPTIONS," the operator may change how the rear lighting and fan speeds are initiated on vehicle start up. Factory preset

switches are indicated with an *. For an additional charge the memory chip may be reprogrammed at the factory to a custom setting. Call your factory representative for details.

Fan Speed

DIP 1 Set in On position adjusts the fan speed to ON at start up.

DIP 1* Set in Off position adjusts the FAN Speed to Off at start up.

Accent and Console Lights

DIP 2* Set in On position adjusts the Accent and Console lights ON at start up.

DIP 2 Set in Off position adjusts the Accent and Console lights Off at start up.

Other Programming

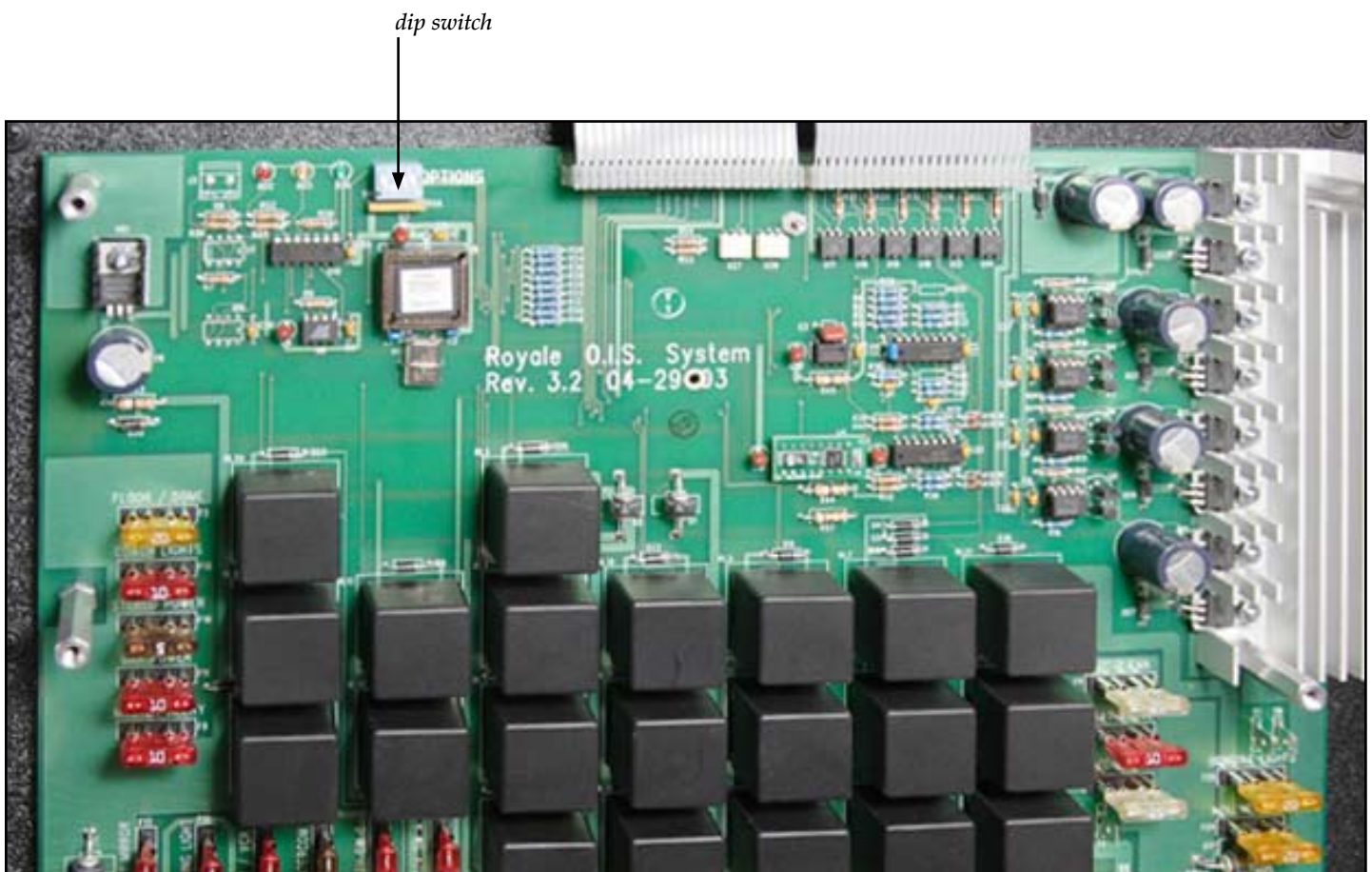
DIP 3 Set in On position reserved for future programming features

DIP 3* Set in Off position reserved for future programming features.

DIP 4 Set in On position reserved for future programming features

DIP 4* Set in Off position reserved for future programming features

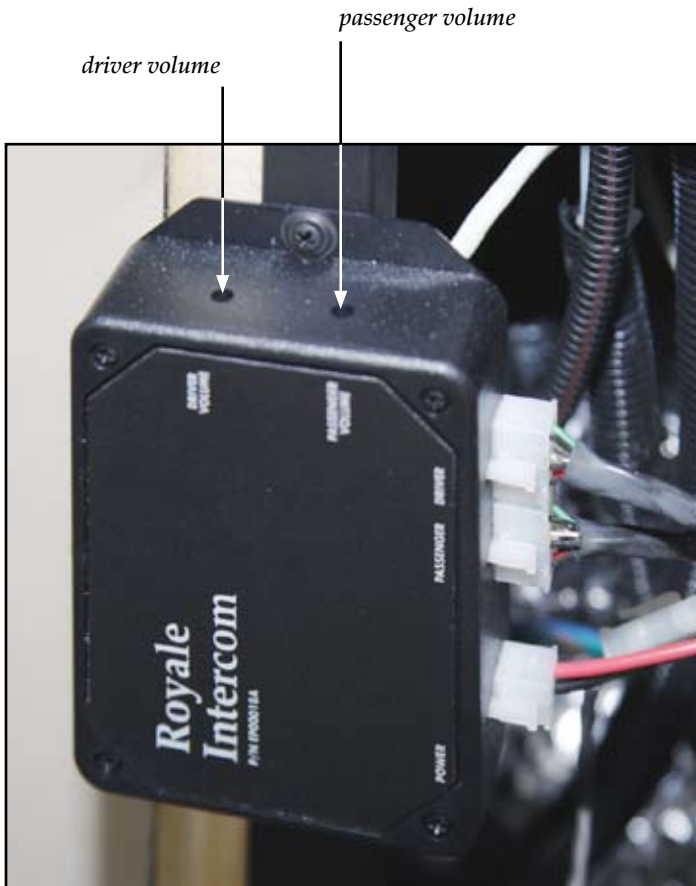
*Factory preset switches



The main circuit board is located behind the front passenger seat.

Intercom Adjustments

The Royale hands free intercom control box is located on the divider behind the driver's seat. There are two adjustments one for driver volume and one for passenger volume. Adjust these according to your preference.



Operating The LED Fiber Illuminator

Your new limousine may be equipped with a LED Fiber Optic Illuminator. The lighting functions of this illuminator are user programmable by adjusting the DIP Switch settings found on the illuminator. The illuminator itself is located near the main control board on the divider panel behind the driver's seat at the bottom of the divider.

Switch Function Reference Chart

Switch One

All ports the same color, color change speed control

Up: Medium-Speed Motor Emulation (Medium-Speed Color Changing)

Down: Slow-Speed Motor Emulation (Slow-Speed Color Changing)

Switch Two

All Ports Alternating Colors, Color Change Speed Control

Up: Medium-Speed Motor Emulation (Medium-Speed Color Changing)

Down: low-Speed Motor Emulation (Slow-Speed Color Changing)

Switch Three

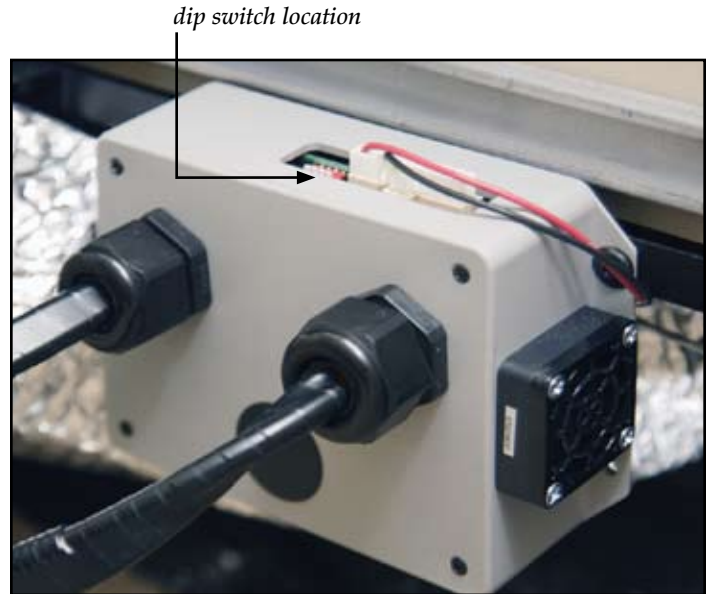
Color Wheel Motor Control Wire Function

Up: Motor Wire Controls Show Selection (Switch Changes Color Patterns)

Down: Motor Wire Controls 'Color Stop' (Switch Stops Changing Colors)

Switch Four

No Function



LED fiber optic illuminator is located behind the drivers seat.



NOTE: The DIP Switch as illustrated above has all switches in the "Up" position. On most Switches, "Down" is also marked as "On."

DIP Switch Functions

DIP Switch Number 1

This switch selects the speed of the default color wheel pattern. This is the pattern that emulates a standard motorized color wheel illuminator; in that all ports are the same color at the same time, and the colors morph from one to another in unison. If the DIP switch is up, the medium motor speed is selected. If the DIP switch is down, the slow motor speed is selected.



DIP Switch Number 2

This switch selects the speed of the alternating ports color wheel pattern (a pattern that is part of the rotating show patterns). This is the pattern that is similar to a standard motorized color wheel illuminator, except that all ports are not the same color at the same time they are alternating colors. If the DIP switch is up, the medium motor speed is selected. If the DIP switch is down, the slow motor speed is selected.

DIP Switch Number 3

This selects whether the motor control voltage (if attached) affects the illuminator. If the DIP switch is up, the motor control voltage causes the microprocessor to step through the built-in color patterns or color shows. Every time the voltage on the wire changes, the next pattern in rotation is selected, in this way the functioning as a remote pattern selector. If the DIP switch is down then the motor control voltage acts as a traditional motorized color wheel (i.e. as a "color stop" control), allowing the color change to stop at random under control of the wire voltage.

DIP Switch Number 4

This switch has no function in this release.

NOTE: The DIP Switch as illustrated above has all switches in the "Up" position. On most Switches, "Down" is also marked as "On."

DIP Switch Settings

Factory Default Settings

Dip Switch	1	2	3	4
up	<input checked="" type="checkbox"/>	<input checked="" type="checkbox"/>	<input checked="" type="checkbox"/>	<input checked="" type="checkbox"/>
down	<input type="checkbox"/>	<input type="checkbox"/>	<input type="checkbox"/>	<input type="checkbox"/>

Record your custom settings here.

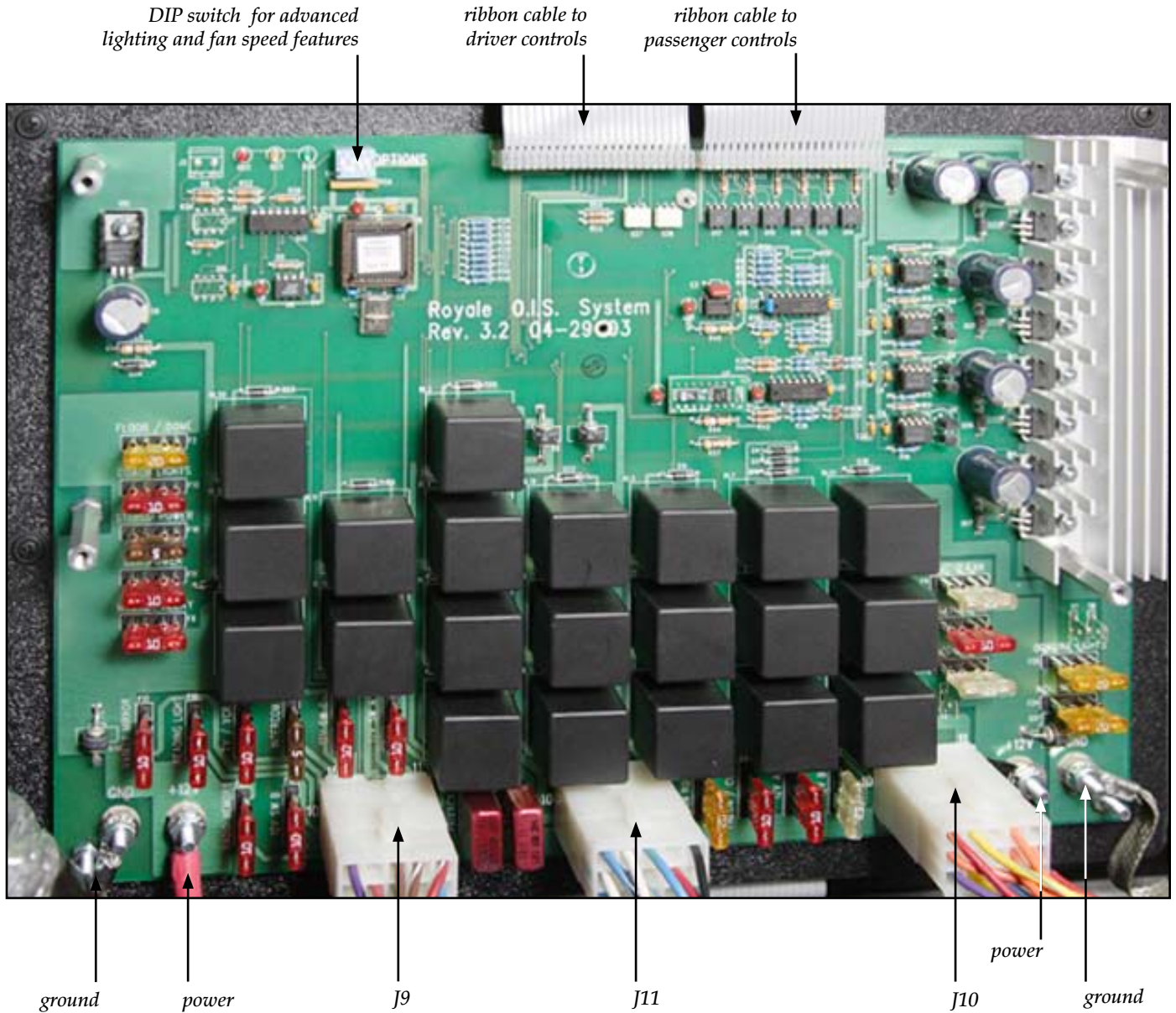
Dip Switch	1	2	3	4
up	<input type="checkbox"/>	<input type="checkbox"/>	<input type="checkbox"/>	<input type="checkbox"/>
down	<input type="checkbox"/>	<input type="checkbox"/>	<input type="checkbox"/>	<input type="checkbox"/>

Dip Switch	1	2	3	4
up	<input type="checkbox"/>	<input type="checkbox"/>	<input type="checkbox"/>	<input type="checkbox"/>
down	<input type="checkbox"/>	<input type="checkbox"/>	<input type="checkbox"/>	<input type="checkbox"/>

Dip Switch	1	2	3	4
up	<input type="checkbox"/>	<input type="checkbox"/>	<input type="checkbox"/>	<input type="checkbox"/>
down	<input type="checkbox"/>	<input type="checkbox"/>	<input type="checkbox"/>	<input type="checkbox"/>

Dip Switch	1	2	3	4
up	<input type="checkbox"/>	<input type="checkbox"/>	<input type="checkbox"/>	<input type="checkbox"/>
down	<input type="checkbox"/>	<input type="checkbox"/>	<input type="checkbox"/>	<input type="checkbox"/>

Main Circuit Board Photo



Fuse Values

F1	privacy divider	10 amp breaker	F16	reading lights	10 amp fuse
F2	floor and dome lights	20 amp fuse	F17	vanity mirror lights	10 amp fuse
F3	heat valve	10 amp fuse	F18	12 volts a switched (<i>sunroof</i>)	10 amp fuse
F4	a/c clutch-freon value #1	10 amp fuse	F19	12 volts b switched	10 amp fuse
F5	a/c #1 fan	25 amp fuse	F20	12 volts c switched	10 amp fuse
F6	a/c #2 fan	25 amp fuse	F21	stereo memory	10 amp fuse
F7	glass divider	10 amp breaker	F22	12 volts a (<i>sunroof memory</i>)	10 amp fuse
F8	master relay	10 amp fuse	F23	12 volts b (<i>power port</i>)	25 amp fuse
F9	sunroof motor	20 amp fuse	F24	accent lights	20 amp fuse
F10	stereo power	5 amp fuse	F25	console lights	20 amp fuse
F11	led illuminator	10 amp fuse			
F12	none				
F13	coach lights	10 amp fuse			
F14	intercom	5 amp fuse			
F15	TV/VCR	10 amp fuse			

Circuit Board Pin Location · Color · Function

J-9 Plug

1	blue/orange	battery relay	10	red/black	TV/VCR
2	yellow/14 gauge	radio memory	11	red/white	12v a switched
3	red/black	TV power	12	brown/white	dome light
4	green/yellow	vanity light	13	brown	coach light trigger
5	white/blue	reading light	14	red	12v c switched
6	blue/red	ignition switch	15	purple/black	intercom power
7					
8	green/white	aux battery power			
9	red/14 gauge	stereo power			

J-10 Plug

1	orange/black	console lights	10	orange	a/c 2 high
2	green/orange	halo lights	11		
3	blue/white	heat valve	12	orange	a/c 1 high
4	yellow/red	12v b	13		
5	violet/white	12v a	14	yellow/blue	freon valve 1
6	orange	a/c 1 high	15	red/yellow	
7	orange	a/c 1 high			
8					
9					

J-11 Plug

1	green	sunroof (+)	11	black/white	sunroof (-)
2			12		
3			13	blue/green	glass motor
4			14	white/green	glass motor
5	blue/brown	privacy	15	blue/black	floor lights
6					
7	red/green	floor light			
8					
9	blue/yellow	led illuminator			
10	white/brown	privacy			

Main Board Trigger Wire Location – Color – Factory Fuse Location

The trigger wire is a power lead to put initial power to the limousine's Main Circuit Board. This wire is always active as long as the vehicle key is in the on accessory position. This allows the switches to become live so that you can run the systems on the board. Without this wire the main board will not be able to activate. Once the main board is activated the power to operate the systems is drawn from another power source.

Town Car Trigger Wire

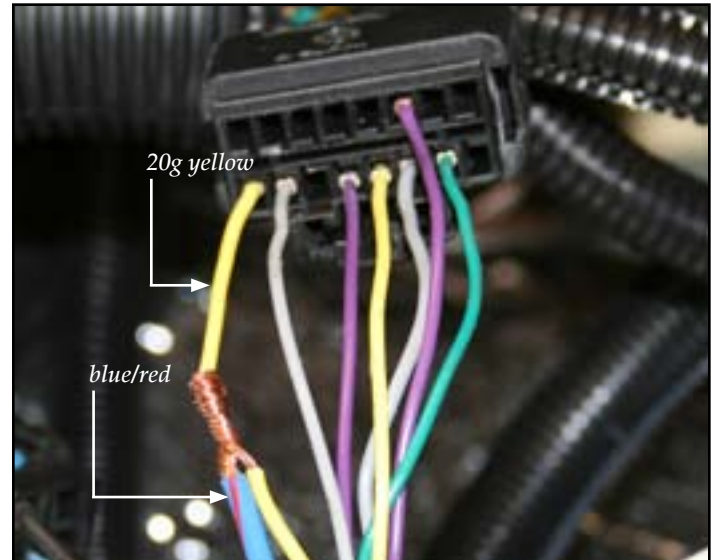
- Blue/red wire from the main board to a blue/light blue wire located at the driver's side A-pillar.
- Town Car fuse #9 is located under the driver's side dash.



blue/red and blue/light blue wire driver's side A-pillar

DTS Trigger Wire

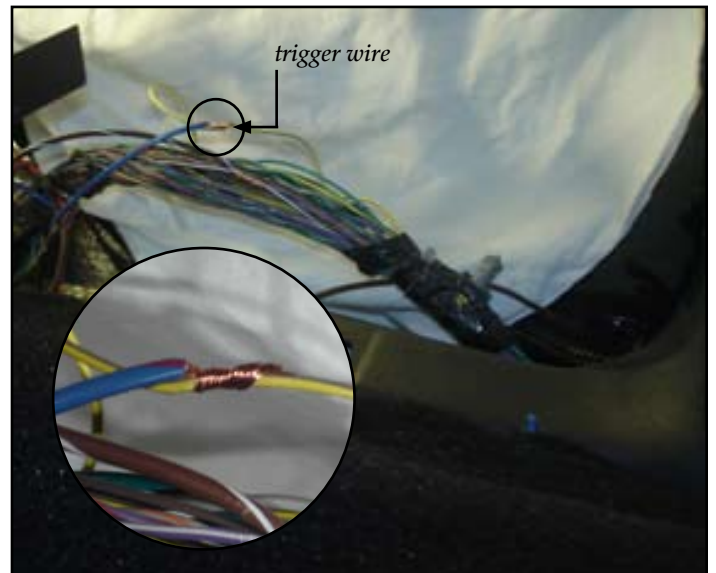
- Blue/red wire from main board to a 20g yellow wire outside of the purple plug located on the driver's side B-pillar.
- DTS fuse #33 is located under the rear seat.



20g yellow wire driver's side B-pillar

Navigator Trigger Wire

- Blue/red wire from the main board to a 22g yellow/gray wire located at the driver's side B-pillar.
- Navigator fuse #35 located under the passenger side dash panel.



22g yellow/gray wire B-pillar

Wire and Harness Location · Color · Function

Under The Hood

red #8	gauge power 12v	green/white	voltage sensor
red #8	gauge power 12v	blue/white	vacuum switch
blue/orange	solenoid trigger		

Passenger Side · Divider		Drivers Side · Divider	
Plug 1		Plug 2	
1 black	ground	1 black	ground
2 black	ground	2 black	ground
3 green/orange	halo	3 green/orange	halo
4		4	
Plug H		Plug F1	
1 black	ground	1 black/white	sunroof
2 black	ground	2 violet/white	constant power
3 black	ground	3 green	sunroof
4 speaker (-)	front left	4 red/white	12v Accessory
5 speaker (-)	front right	Plug F2	
6 green/yellow	vanity mirror	1 black	ground
7 black/blue	factory dome & floor lights	2 white/blue	no smoking light
8		3 blue/yellow	illuminator motor
9 speaker (+)	front left	Plug L	
10 speaker (+)	front right	purple/black	intercom
11 yellow/red	acc/power point	black	ground
12 brown	coach light	Plug B	
13 yellow	radio memory	1 black	ground
14 white/blue	reading lights	2 orange/black	console light
15 red	radio 12v acc.	3 red/green	floor light
Plug E		4 red/black	TV power
1 black	ground	5 green/orange	accent light
2 orange/black	console	6	
3 red/green	floor light	Plug LTV/R (4 pin plug)	
4 red/black	TV power	1 black	ground
5 green/orange	accent light	2 red/black	tv/vcr
6 yellow/red	power point	3 orange	a/c 2
7 speaker (+)	rear right	4 brown	coach lights
8 speaker (-)	rear right		
9			
10			
11 speaker (+)	rear left		
12 speaker (-)	rear left		
Plug M			
1 black	ground		
2 blue/yellow	color wheel		

NOTE: Please refer to Wire Routing Main Harness on page 28.

Wire and Harness Location · Color · Function

Center · Divider

Plug P3

- | | | |
|---|-----------|--------------|
| 1 | black | ground |
| 2 | red/green | floor lights |

Plug C

- | | | |
|---|-------------|-----------------|
| 1 | white/brown | privacy divider |
| 2 | white/green | glass divider |
| 3 | blue/brown | privacy divider |
| 4 | blue/green | glass divider |

Plug P

- | | | |
|---|--------------|-------------------|
| 1 | black | ground |
| 2 | blue/yellow | color wheel |
| 3 | green/orange | color wheel motor |

Plug N

- | | | |
|---|-----------|--------|
| 1 | black | ground |
| 2 | red/black | tv/vcr |

NOTE: Please refer to Wire Routing Main Harness on page 29.

Power Distribution Module – Town Car

Royale locates the main power distribution module relay fuses and battery solenoid in a sealed box under the hood located over the passenger side wheel well. Open this box by removing the plastic wing nut to access the 50 amp main fuses. Included in your new vehicle delivery package are two replacement fuses for your convenience. Additional replacement fuses can be found at any automotive supply store. Replace with cartridge style J-Case 50 AMP fuses.

NOTE: Do not exceed 50 AMPs when replacing the fuses.



power distribution module with cover on



50 AMP Fuse block with fuse cover removed



power distribution module with cover removed



cartridge style J-Case 50 AMP fuse

Power Distribution Module – DTS and Navigator

Power Distribution Module – DTS

Royale locates the main power distribution module circuit breakers and battery solenoid under the passenger rear seat. Remove the rear seat to access the power distribution module. The circuit breakers are automatically reset after a surge. If they do not automatically reset then they may be damaged and need replacement.



DTS power distribution module under the passenger rear seat

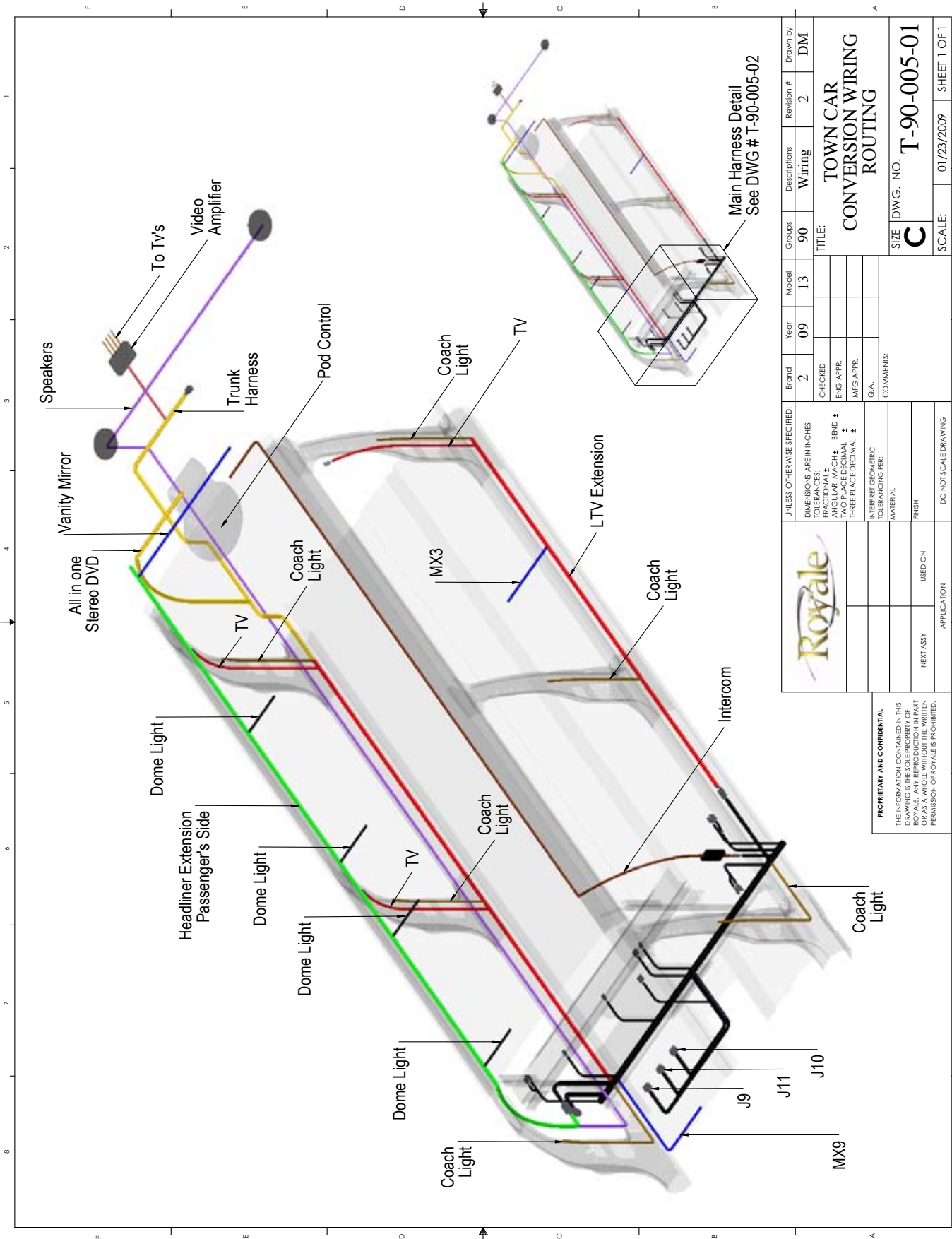
Power Distribution Module – Navigator

Royale locates the main power distribution module relay fuses and battery solenoid under the hood located on the passenger side fire wall. Included in your new vehicle delivery package are two replacement fuses for you convenience. Follow the directions in Power Distribution Module – Town Car for fuse replacement. Do not exceed the 50 amps when replacing the fuses.



Navigator power distribution module under the hood

Wire Routing Extension · Town Car

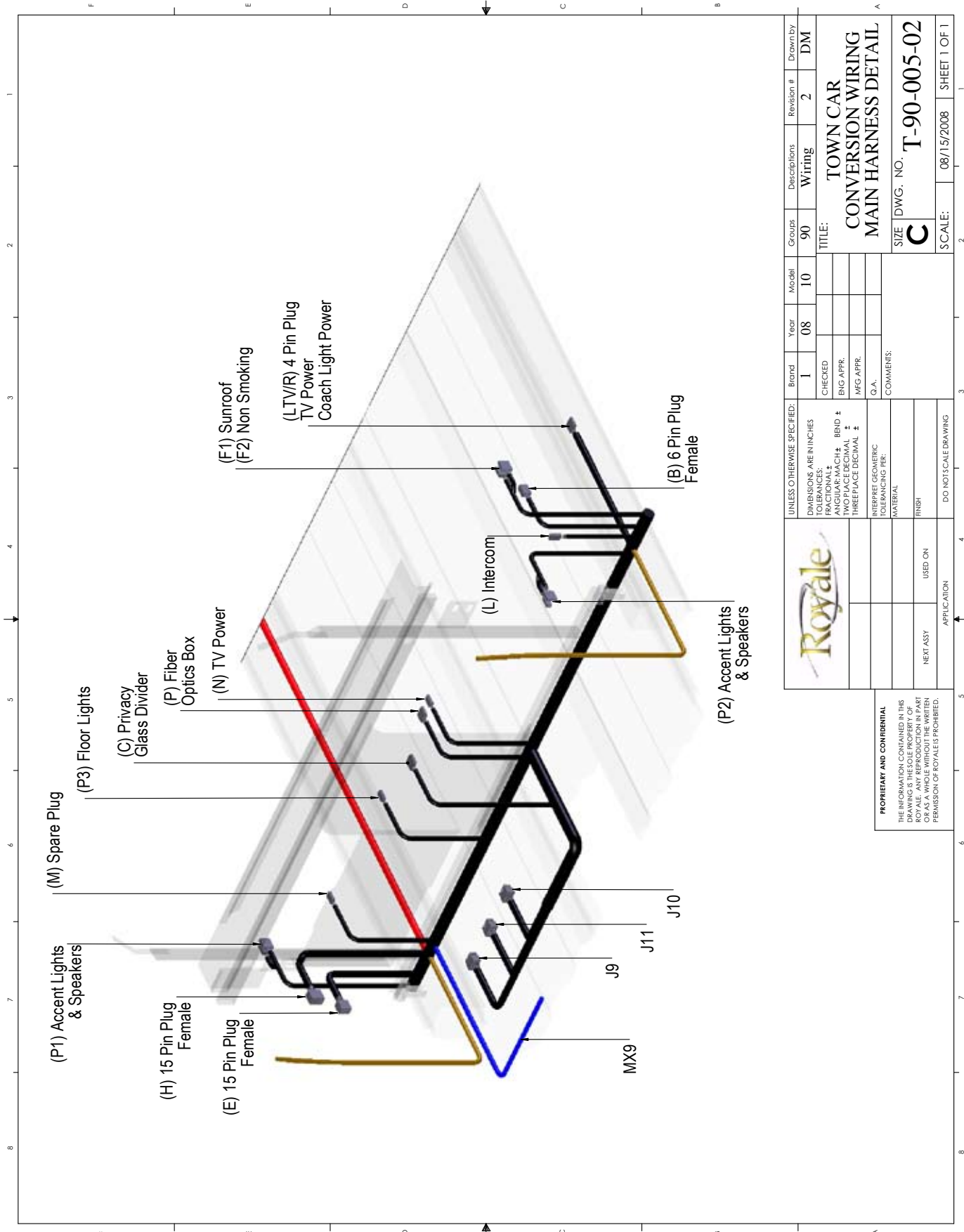


Brand	Year	Model	Groups	Descriptions	Revision #	Drawn by
2	09	13	90	Wiring	2	DM
CHECKED _____ ENG APPR. _____ MFG APPR. _____ Q.A. _____ COMMENTS: _____						
DIMENSIONS ARE IN INCHES TOLERANCES: FRACTIONAL ± ANGULAR: MACH ± BEND ± TWO PLACE DECIMAL ± THREE PLACE DECIMAL ±						
INTERPRET GEOMETRIC TOLERANCING PER: _____ MATERIAL: _____ FINISH: _____ DO NOT SCALE DRAWING						
UNLESS OTHERWISE SPECIFIED:						

		TITLE: TOWN CAR CONVERSION WIRING ROUTING
SIZE: C	DWG. NO.: T-90-005-01	SCALE: 01/23/2009
NEXT ASSY	USED ON	APPLICATION

PROPRIETARY AND CONFIDENTIAL
 THE INFORMATION CONTAINED IN THIS DRAWING IS THE SOLE PROPERTY OF ROYALE. ANY REPRODUCTION IN PART OR AS A WHOLE WITHOUT THE WRITTEN PERMISSION OF ROYALE IS PROHIBITED.

Wire Routing Main Harness - Town Car

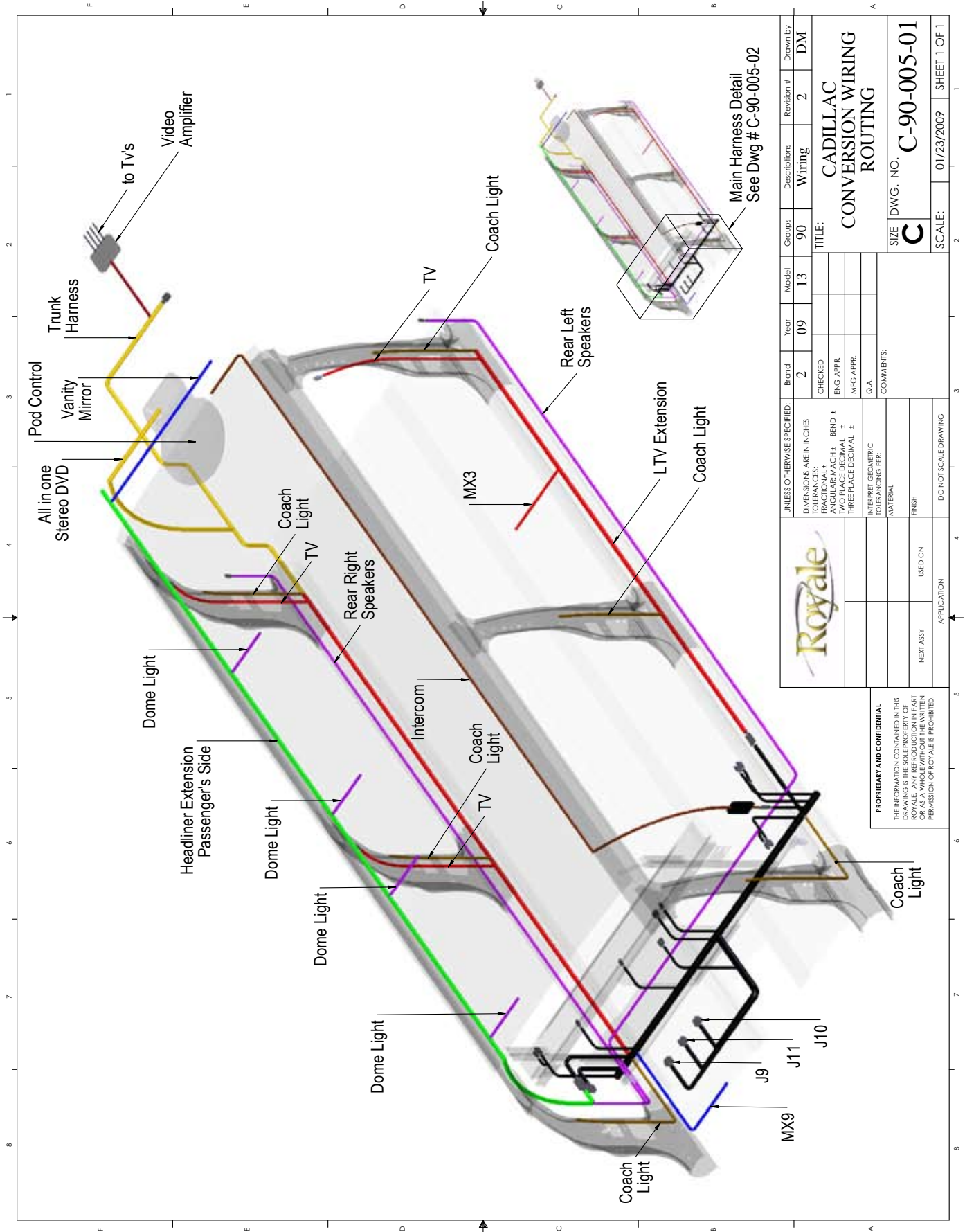


Group	Year	Model	Descriptions	Revision #	Drawn By
90	08	T0	Wiring	2	DM
TITLE: TOWN CAR CONVERSION WIRING MAIN HARNESS DETAIL					
SIZE: DWG. NO. T-90-005-02 C					
SCALE: 08/15/2008 SHEET 1 OF 1					

UNLESS OTHERWISE SPECIFIED:	Brand	Year	Model	Descriptions	Revision #	Drawn By
DIMENSIONS ARE IN INCHES	1	08	T0	Wiring	2	DM
TOLERANCES:						
FRACTIONAL ±						
DECIMAL ±						
TWO PLACE DECIMAL ±						
THREE PLACE DECIMAL ±						
INTERPRET GEOMETRIC TOLERANCING PER:						
MATERIAL						
FINISH						
DO NOT SCALE DRAWING						

PROPRIETARY AND CONFIDENTIAL
 THE INFORMATION CONTAINED IN THIS DRAWING IS THE SOLE PROPERTY OF ROYALE. ANY REPRODUCTION IN PART OR WHOLE WITHOUT THE WRITTEN PERMISSION OF ROYALE IS PROHIBITED.

Wire Routing Extension · DTS

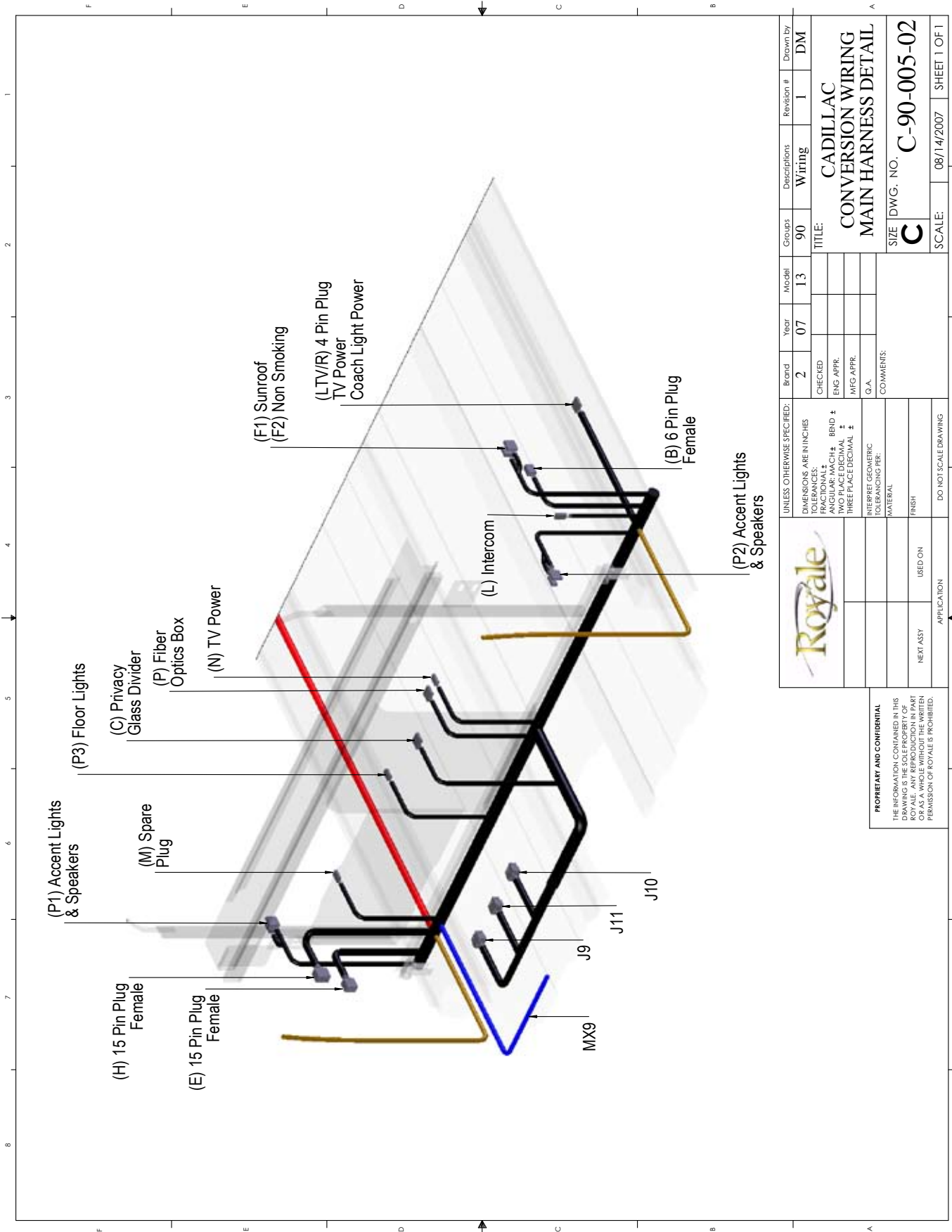


Brand	Year	Model	Groups	Descriptions	Revision #	Drawn by
2	09	13	90	Wiring	2	DM
UNLESS OTHERWISE SPECIFIED: DIMENSIONS ARE IN INCHES TOLERANCES: FRACTIONAL: ± ANGULAR: MACH ± TWO PLACE DECIMAL ± THREE PLACE DECIMAL ± G.A. INTERPRET GEOMETRIC TOLERANCING PER: MATERIAL: FINISH: DO NOT SCALE DRAWING						
TITLE: CADILLAC CONVERSION WIRING ROUTING						
SIZE DWG. NO. C-90-005-01						
SCALE: 01/23/2009 SHEET 1 OF 1						

ROYALE	APPLICATION
NEXT ASSY	USED ON

PROPRIETARY AND CONFIDENTIAL
 THE INFORMATION CONTAINED IN THIS DRAWING IS THE SOLE PROPERTY OF ROYALE. ANY REPRODUCTION IN PART OR AS A WHOLE WITHOUT THE WRITTEN PERMISSION OF ROYALE IS PROHIBITED.

Wire Routing Main Harness · DTS



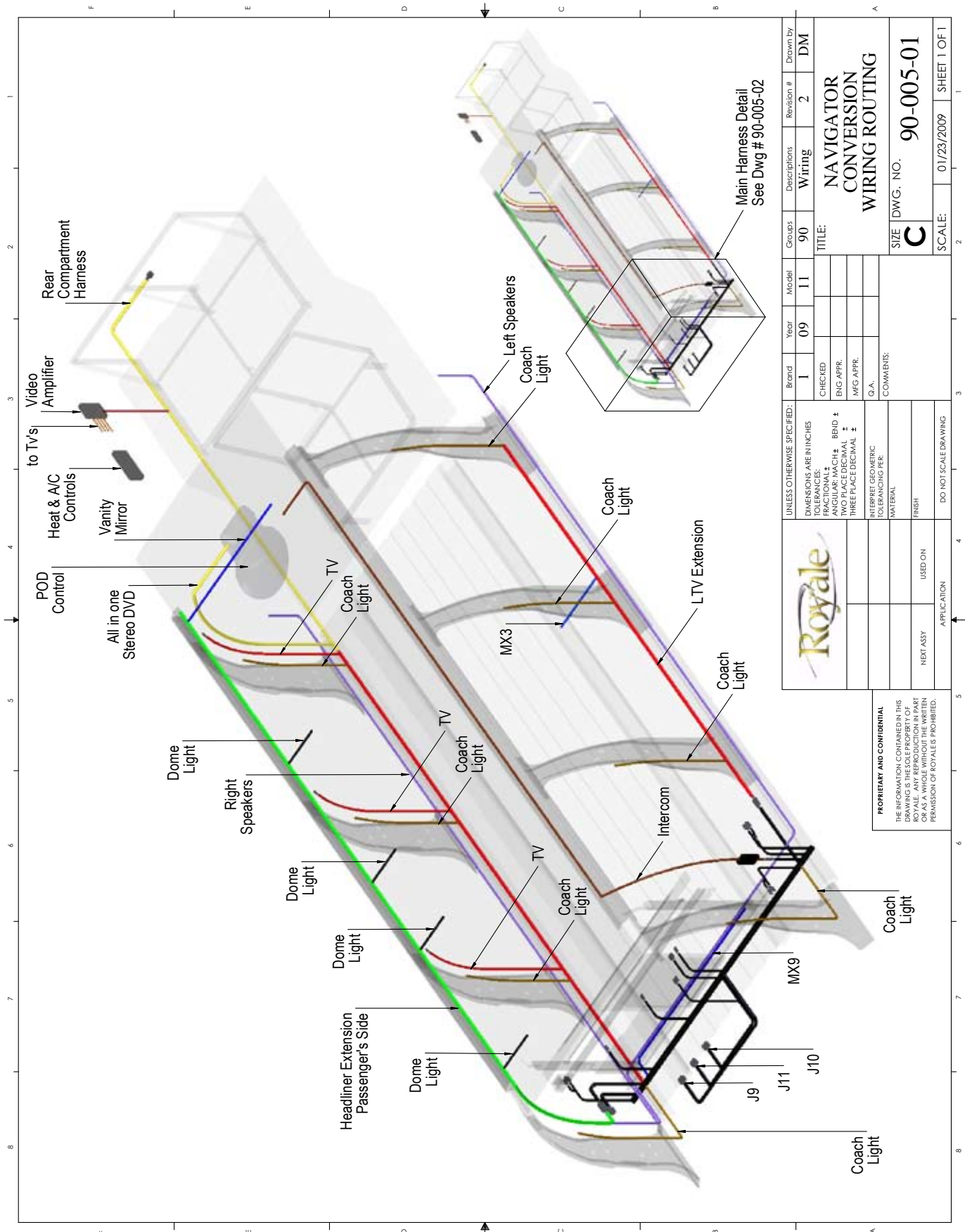
Brand	Year	Model	Groups	Descriptions	Revision #	Drawn by
2	07	13	90	Wiring	1	DM
CHECKED: _____ ENG APPR: _____ MFG APPR: _____ G.A. _____ COMMENTS: _____						
DIMENSIONS ARE IN INCHES FRACTIONAL ± BEND ± ANGULAR MATCH ± TOLERANCES: FRACTIONAL ± THREE PLACE DECIMAL ± INTERPRET GEOMETRIC TOLERANCING PER: _____ MATERIAL: _____ FINISH: _____ DO NOT SCALE DRAWING						
UNLESS OTHERWISE SPECIFIED:						
TITLE: CADILLAC CONVERSION WIRING MAIN HARNESS DETAIL						
SIZE DWG. NO. C-90-005-02						
SCALE: 08/14/2007 SHEET 1 OF 1						



PROPRIETARY AND CONFIDENTIAL
 THE INFORMATION CONTAINED IN THIS DRAWING IS THE SOLE PROPERTY OF ROYALE. ANY REPRODUCTION IN PART OR WHOLE WITHOUT THE WRITTEN PERMISSION OF ROYALE IS PROHIBITED.

APPLICATION	USED ON
NEXT ASSY	

Wire Routing Extension · Navigator



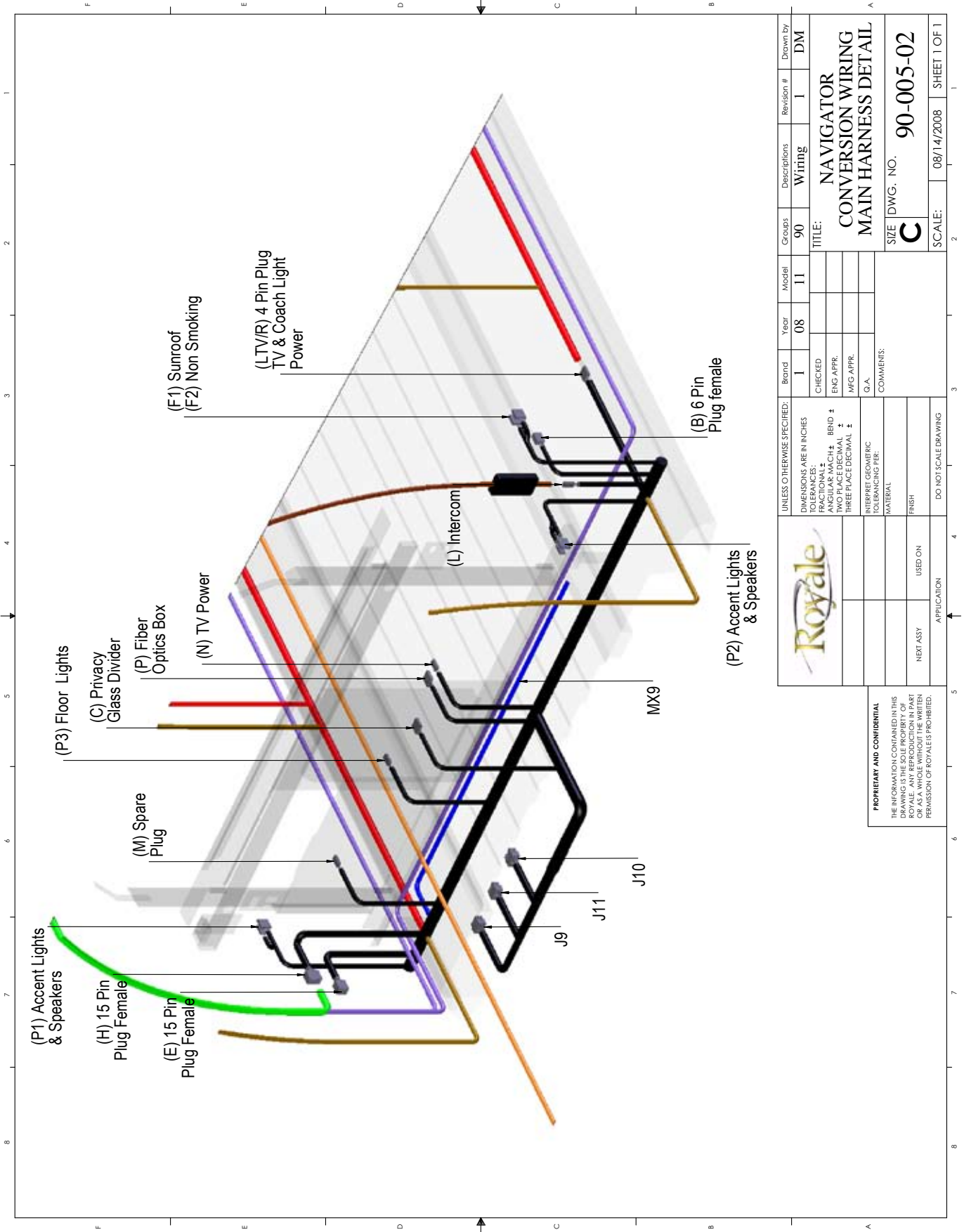
Brand	Year	Model	Groups	Descriptions	Revision #	Drawn by
1	09	11	90	Wiring	2	DM

UNLESS OTHERWISE SPECIFIED: DIMENSIONS ARE IN INCHES TOLERANCES: ANGULAR: MACH ± TWO PLACE DECIMAL ± THREE PLACE DECIMAL ± MFG APPR.	
CHECKED	ENG APPR.
MATERIAL FINISH USED ON NEXT ASSY	
APPLICATION	

TITLE: NAVIGATOR CONVERSION WIRING ROUTING
SIZE DWG. NO. 90-005-01
SCALE: 01/23/2009
SHEET 1 OF 1

PROPRIETARY AND CONFIDENTIAL
 THE INFORMATION CONTAINED IN THIS DRAWING IS THE SOLE PROPERTY OF ROYALE. IT IS TO BE USED ONLY FOR THE PART OR AS A WHOLE WITHOUT THE WRITTEN PERMISSION OF ROYALES PROHIBITED.

Wire Routing Main Harness · Navigator



Brand	Year	Model	Groups	Descriptions	Revision #	Drawn By
1	08	11	90	Wiring	1	DM
UNLESS OTHERWISE SPECIFIED: DIMENSIONS ARE IN INCHES TOLERANCES FRACTIONAL ± ANGULAR MATCH ± TWO PLACE DECIMAL ± THREE PLACE DECIMAL ± O.A. INTERPRET GEOMETRIC TOLERANCING PER: MATERIAL FINISH DO NOT SCALE DRAWING						
TITLE: NAVIGATOR CONVERSION WIRING MAIN HARNESS DETAIL						
SIZE DWG. NO. 90-005-02 SCALE: 08/14/2008 SHEET 1 OF 1						

PROPRIETARY AND CONFIDENTIAL
 THE INFORMATION CONTAINED IN THIS DRAWING IS THE PROPERTY OF ROYALE. ANY REPRODUCTION IN PART OR AS A WHOLE WITHOUT THE WRITTEN PERMISSION OF ROYALE IS PROHIBITED.

APPLICATION	USED ON
NEXT ASSY	

Heater Control Valve Operation

Your limousine is equipped with a manual heater control valve (see picture A below) and an electric operated heater control valve. The manual valve was installed to ensure maximum performance of your air conditioning system during times of high ambient temperatures. The manual valve will shut off flow of all hot water to the heat exchanger located in the heating/cooling system servicing the rear passenger cabin.

Accidental flow of hot water into the system, either by the vacuum valve leaking or inadvertent activation of the heater control by a passenger or driver, will be eliminated by using the manual heater control valve.



Picture A under hood manual valve location in the Lincoln Town Car

To shut hot water flow off during high temperature conditions turn the manual heater valve to the OFF position (see picture B below). During cooler

temperature conditions turn the manual heater control valve to the ON position (see picture C below).



(pic. B) manual valve in off position stops hot water flow



(pic. C) manual valve in on position allows hot water flow

NOTE: The valve arm will cover its actual position. When the arm covers the ON position, OFF will be revealed, the valve is actually ON or OPEN. Do not get confused. The valve arm must cover the position you want it to be in.

The system will function properly between heat and air conditioning with the valve in the ON position but it should be reset to OFF during extended periods of high ambient temperature. Without setting the valve to ON your rear heat will not work.

Manual Heater Control Valve Locations · Town Car · Navigator · DTS

Town Car

Royale locates the manual heater control valve under the hood on the passenger side. Follow the directions in Manual Heater Control Valve Operation on page 33 to adjust the settings.



Lincoln Town Car manual heater control valve under hood location

Navigator

Royale locates the manual heater control valve under the hood on the passenger side. Follow the directions in Manual Heater Control Valve Operation on page 33 to adjust the settings.



Navigator manual heater control valve under hood location

DTS

Royale locates the manual heater control valve behind the passenger front seat. Pull the carpet up to expose the valve. Follow the directions in Manual Heater Control Valve Operation on page 33 to adjust the setting.

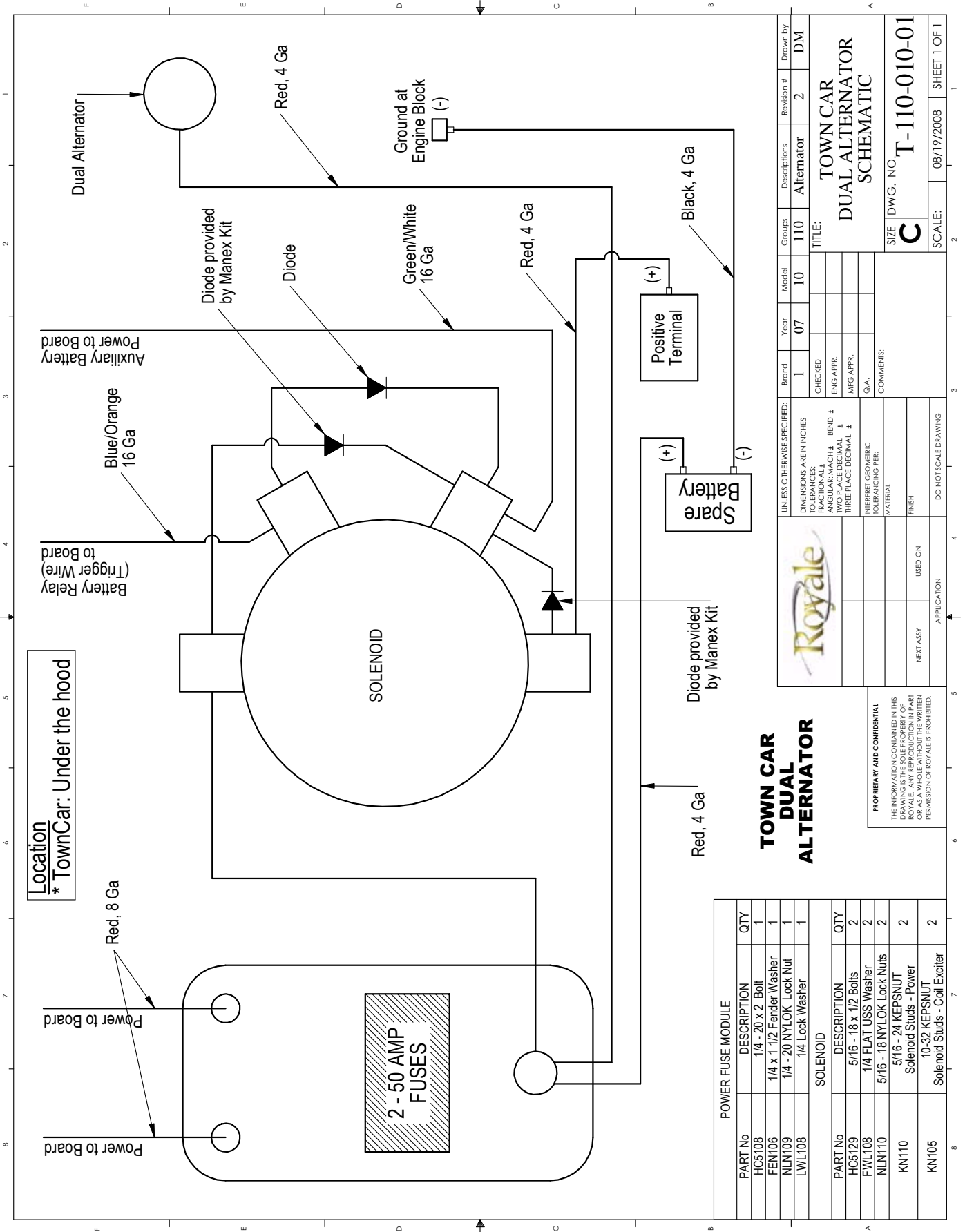


DTS manual heater control valve behind passengers seat

Dual Alternator Location · Town Car · Optional Equipment



Dual Alternator Schematics · Town Car · Optional Equipment



POWER FUSE MODULE		QTY
PART No	DESCRIPTION	
HC5108	1/4" - 20 x 2 Bolt	1
FEN106	1/4 x 1 1/2 Fender Washer	1
NLN109	1/4 - 20 NYLON Lock Nut	1
LWL108	1/4 Lock Washer	1
SOLENOID		QTY
PART No	DESCRIPTION	
HC5129	5/16 - 18 x 1/2 Bolts	2
FWL108	1/4 FLAT USS Washer	2
NLN110	5/16 - 18 NYLON Lock Nuts	2
KN110	5/16 - 24 KEPSNUT Solenoid Studs - Power	2
KN105	10-32 KEPSNUT Solenoid Studs - Coil Exciter	2

TOWN CAR DUAL ALTERNATOR

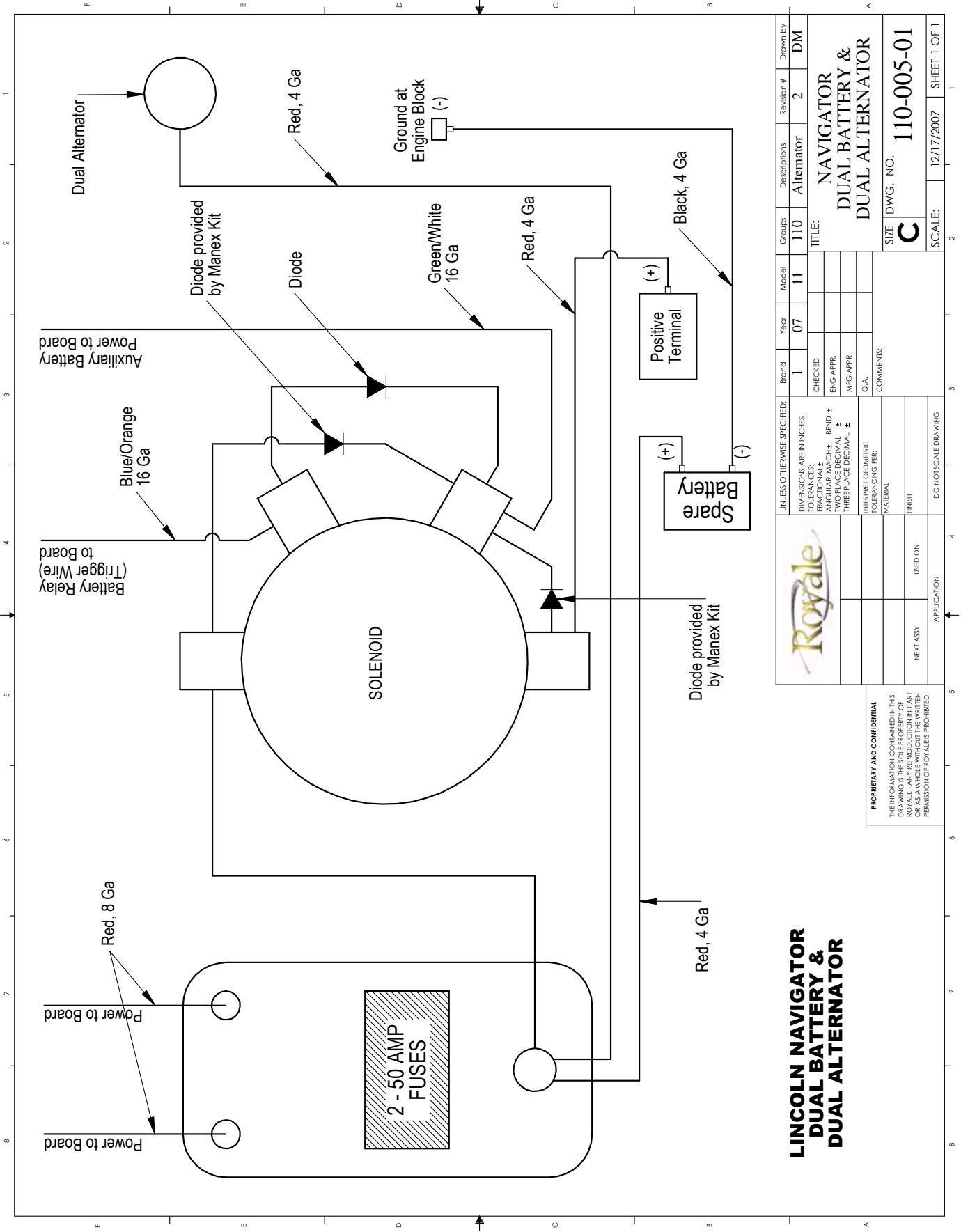
UNLESS OTHERWISE SPECIFIED:		Brand	Year	Model	Groups	Descriptions	Revision #	Drawn by
DIMENSIONS ARE IN INCHES		1	07	10	110	Alternator	2	DM
FRACTIONAL		CHECKED						
ANGULAR MACH ±	BEND ±	ENG APPR.						
TWO PLACE DECIMAL ±	THREE PLACE DECIMAL ±	MFG APPR.						
TOLERANCING PER:		G.A.						
MATERIAL		COMMENTS:						
FINISH		TITLE:						
USED ON		TOWN CAR						
NEXT ASSY		DUAL ALTERNATOR SCHEMATIC						
APPLICATION		SIZE		DWG. NO.		SCALE:		
		C		T-110-010-01		08/19/2008		
						SHEET 1 OF 1		

PROPRIETARY AND CONFIDENTIAL
 THE INFORMATION CONTAINED IN THIS DRAWING IS THE SOLE PROPERTY OF ROYALE. IT IS TO BE USED ONLY AS PART OF A WHOLE WITHOUT THE WRITTEN PERMISSION OF ROYALE'S PROHIBITED.



Location
 *TownCar: Under the hood

Dual Battery and Alternator Schematics · Navigator



UNLESS OTHERWISE SPECIFIED:	Brand	Year	Model	Groups	Descriptions	Revision #	Drawn by
DIMENSIONS ARE IN INCHES	1	07	11	110	Alternator	2	DM
TOLERANCES	CHECKED						
FRACTIONAL ±	ENG APPR.						
ANGULAR: MACH ±	MFG APPR.						
TWO PLACE DECIMAL ±	G.A.						
THREE PLACE DECIMAL ±	COMMENTS:						
INTERPRET GEOMETRIC TOLERANCING PER:							
MATERIAL							
FINISH							
USED ON							
APPLICATION							
DO NOT SCALE DRAWING							

		NAVIGATOR DUAL BATTERY & DUAL ALTERNATOR	
		SIZE DWG. NO. 110-005-01 SCALE: 12/17/2007 SHEET 1 OF 1	

PROPRIETARY AND CONFIDENTIAL
 THE INFORMATION CONTAINED IN THIS DRAWING IS THE SOLE PROPERTY OF ROYALE. ANY REPRODUCTION IN PART OR AS A WHOLE WITHOUT THE WRITTEN PERMISSION OF ROYALES IS PROHIBITED.

New Vehicle Limited Warranty · United States Only

Royale warrants each new conversion to be free from defects in material and workmanship under this warranty being limited to making good at the factory, or an authorized repair facility, to the original purchaser, any part or parts thereof which shall, within twenty-four (24) months after delivery of such vehicle or before such vehicle has been driven fifty thousand (50,000) miles, whichever event shall first occur and which upon examination shall disclose to our satisfaction to have been defective. Royale warrants its structural modifications for 60 months or 150,000 miles whichever shall occur first. This warranty being expressly in lieu of all other warranties, expressed or implied. This warranty shall not apply to any body part or parts which have been repaired or altered outside of the manufacturer's factory in any way so as in the judgment of the manufacturer to affect its stability and reliability, nor which has been subjected to misuse, negligence or accident.

Royale makes no warranty whatsoever to any OEM chassis or chassis part, not modified by Royale.

Royale reserves the right to make changes in design, and changes or improvements on its product without imposing any obligation upon itself to install the same on products theretofore manufactured.

All claims for warranty adjustments must originate within the warranty period as stated herein, and must be authorized through Royale.

All outside purchased parts such as heater motors, batteries, moon roofs, TV's, radios, VCRs, or any other electrical operated apparatus are to be warranted through their manufacturer.

The 120" Lincoln Town Car and 130" Cadillac DTS trunk are rated for a maximum luggage capacity of 100 lbs. The spare tire and jack are included with these vehicles but must be removed to keep these vehicles within the limits of the gross vehicle weight rating established by Ford motor company and General Motors Corporation.

The 140" Lincoln Navigator trunk is rated for a maximum luggage capacity of 0 lbs. The spare tire and jack are not included with this vehicle to keep this vehicle within the limits of the gross vehicle weight rating established by Ford Motor Company.

Royale must be notified before any warranty repair work is performed.

Royale reserves the right to alter or make substitutions to any vehicle standard or optional equipment or vehicle design, or to alter the terms of its warranty at any time without prior notice.



NOTE: It is important that you contact our Warranty Department before any warranty repair work is performed.

Contact the Warranty Department for your authorization at 978.374.4530 or service@royalelimo.com

New Vehicle Limited Warranty · International

Royale warrants each new conversion to be free from defects in material and workmanship under this warranty being limited to making good at the factory, or an authorized repair facility, to the original purchaser, any part or parts thereof which shall, within twelve (12) months after delivery of such vehicle or before such vehicle has been driven twenty-four thousand (24,000) miles, whichever event shall first occur and which upon examination shall disclose to our satisfaction to have been defective. Royale warrants its structural modifications for 60 months or 150,000 miles whichever shall occur first. This warranty being expressly in lieu of all other warranties, expressed or implied. This warranty shall not apply to any body part or parts which have been repaired or altered outside of the manufacturer's factory in any way so as in the judgment of the manufacturer to affect its stability and reliability, nor which has been subjected to misuse, negligence or accident.

Royale makes no warranty whatsoever to any OEM chassis or chassis part, not modified by Royale.

Royale reserves the right to make changes in design, and changes or improvements on its product without imposing any obligation upon itself to install the same on products theretofore manufactured.

All claims for warranty adjustments must originate within the warranty period as stated herein, and must be authorized through Royale. All warranted parts are shipped freight prepaid and all parts returned to Royale are to be returned freight prepaid.

All outside purchased parts such as heater motors, batteries, moon roofs, TVs, radios, VCRs, or any other electrical operated apparatus are to be warranted through their manufacturer.

The 120" Lincoln Town Car and 130" Cadillac DTS trunk are rated for a maximum luggage capacity of 100 lbs. The spare tire and jack are included with these vehicles but must be removed to keep these vehicles within the limits of the gross vehicle weight rating established by Ford Motor Company and General Motors Corporation.

The 140" Lincoln Navigator trunk is rated for a maximum luggage capacity of 0 lbs. The spare tire and jack are not included with this vehicle to keep this vehicle within the limits of the gross vehicle weight rating established by Ford Motor Company.

Royale must be notified before any warranty repair work is performed.

Royale reserves the right to alter or make substitutions to any vehicle standard or optional equipment or vehicle design, or to alter the terms of its warranty at any time without prior notice.



NOTE: It is important that you contact our Warranty Department before any warranty repair work is performed.

Contact the Warranty Department for your authorization at 978.374.4530 or service@royalelimo.com
